

SAlexa Fluor 532 Conjugated Antibody

Summary:

Quantity size: 0.1mL/0.5mL

Concentration: 2mg/mL Buffer=0.01M PBS (pH7.4) with 1% BSA, 0.03% Proclin300 and 50% Glycerol.

Storage: Shipped at 4°C, Store at -20°C at least one year (Avoid repeated freeze/thaw cycles).

Purification method: Protein A/G

Background:

SAlexa Fluor is a fluorescent dye with stronger stability and better fluorescence intensity. SAlexa Fluor 532 conjugated antibody is a kind of immunochemistry reagents widely used in immunology, molecular biology and various branches of clinical medicine. The various SAlexa Fluor 532 labeled antibodies developed by Solarbio are all self-prepared immune serums. The immune serums are purified by affinity chromatography to obtain high-purity IgG.

Application:

IF=1:50-500

Excitation spectrum:527nm

Emission spectrum: 558nm

Not yet tested in other applications.

Dilution is subject to the product label. Optimal working dilutions must be determined by the end user.

Related products:

SPA131 Goat anti-mouse IgG (purified)

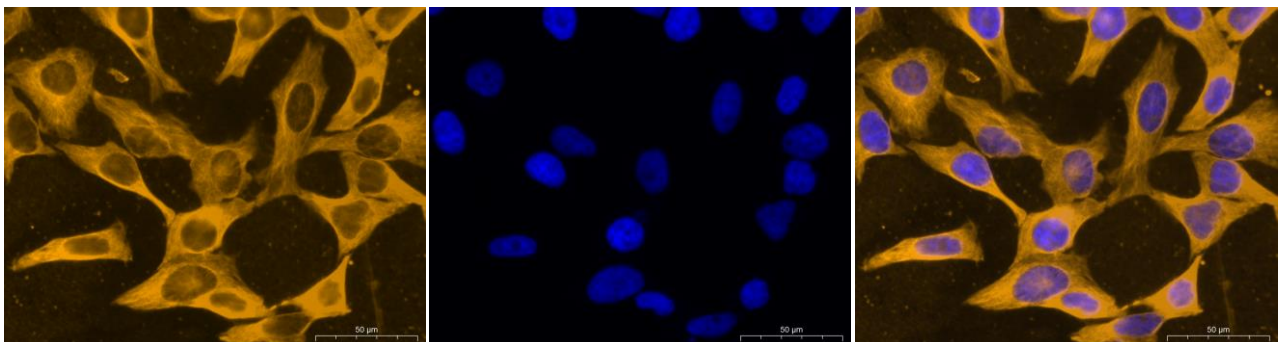
SA134 Goat anti-rabbit IgG (immune serum)

SF134 Goat anti-rabbit IgG-FITC

SE237 Rabbit anti-pig IgG-HRP

K1031G-Cy3 Goat anti-Mouse IgG/ Cy3

Product Image:



Immunofluorescence analysis of Goat anti-mouse IgG/ SAlexa Fluor 532 (K1031G-AF532) was performed using HeLa cells stained with Anti- α -tubulin Monoclonal Antibody (K200064M). The cells were fixed with 4% paraformaldehyde for 10 minutes, permeabilized with 0.1% Triton X-100 for 10 minutes, blocked with 1% BSA for 1 hour and labeled with Anti- α -tubulin Monoclonal Antibody for 2 hours at RT. Goat anti-mouse IgG/ SAlexa Fluor 532 (K1031G-AF532) was used at 1:100 in phosphate buffered saline containing 0.2% BSA for 45 minutes at RT, for detection of β -Tubulin in the cytoplasm (red). Nuclei (blue) were stained with DAPI (C0065).

Important Note: This product as supplied is intended for research use only, not for use in human, therapeutic or diagnostic applications.

Sales: sales@solarbio.com sales-china@solarbio.com

Tech: immunoservice@solarbio.com

Tel: 400-968-6088

For research use only
For more information visit www.solarbio.com